



nextar[™] 

Digital MP3 Player - MA750

Instruction Manual

Reminder: Thank you for selecting our product. In order to ensure correct operation, please read this manual carefully.

1. Instruction

- (1) We try to ensure the correctness and completeness of this manual, but mistakes and omission may still exist.
- (2) Our company is not responsible for any data loss caused by malpractice of software, wrong repair or other accident, or any indirect loss herein arising of.
- (3) Revision to the software and hardware or user manual is not subject to further notification, and our company boasts the final interpretation right to this manual.

Content

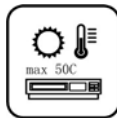
1.	Instruction	1
2.	Precaution	5
3.	System requirement.....	7
4.	Introduction.....	8
4.1	Feature.....	8
4.2	Button layout	10
4.3	Battery charge	11
4.4	USB driver installation	12
4.5	Connection and download.....	12
4.5.1	Connection to PC.....	12
4.5.2	Music download.....	13
4.5.3	Remove from USB port.....	14
4.6	LCD display	16
4.7	Menu.....	17
4.7.1	Main menu.....	17
4.7.2	Selection and exit.....	18
4.8	Power on and off	18
4.8.1	Power on player	18
4.8.2	Power off player	19
5.	Application.....	20

5.1	Music playback function	20
5.1.1	Play all.....	21
5.1.2	Internal device	21
5.2	Photo	24
5.2.1	Manual browse	25
5.2.2	Slide show	25
5.2.3	Thumbnail.....	26
5.3	Movie	26
5.4	Voice.....	33
5.5	Radio	34
5.5.1	FM radio.....	36
5.5.2	FM record	37
5.5.3	FM band.....	38
5.5.4	Auto scan.....	38
5.5.5	FM Radio	38
5.6	Record.....	39
5.7	Delete	41
5.7.1	Delete one	41
5.7.2	Delete all.....	41
5.8	Settings	42
5.8.1	Language.....	42

5.8.2	EQ.....	43
5.8.3	Play mode	43
5.8.4	Record Type.....	44
5.8.5	Contrast	44
5.8.6	Timer off.....	45
5.8.7	Reset.....	46
5.9	About.....	46
5.10	Exit.....	46
6.	Trouble shooting.....	47
7.	DRM music transfer function.....	48
7.1	Download operation of WMA music with DRM9 (PD-DRM) protection	48
7.2	Operation introduction.....	48
8.	Specification.....	53

2. Precaution

- (1) Do not use this player when driving, riding or operating any other vehicles as it may lead to traffic accidents, which is illegal in some regions. Even when walking on the road, especially crossing the roads, listening with high volume is also hazardous. Please pay special attention or stop using this player in places with potential hazard.
- (2) Before powering of the player, please plug in the earphone to avoid damaging the earphone as well as maintenance of the player. Turn off the player when stop using it.
- (3) Keep it clean. Do not place it near heat resource or subject to direct sunlight, dust, humid or rain.
- (4) If the surface becomes dusty, clean it with a soft, slightly dampened cloth. Never use any alcohol or diluted detergent to clean the cabinet.
- (5) Do not use it in extra-dry environment to avoid electrostatics.
- (6) Please make sure that the player will not be disconnected in the process of formatting or uploading and downloading to avoid program mistakes.
- (7) When it is used as mobile disc, make sure read and write files with correct method. Any mal-operation may lead to the loss of data, which is not being responsible by our company.



- (8) As the software provided by original equipment manufacturer has the optimum flash storage speed, all players with memory less than 128MB cannot be formatted as FAT-32 in the operating system.
- (9) Attention: Because of the different memory calculating method and the player software (firmware) is stored in the device flash memory and, it will cause the difference between flash memory marked capacity and real capacity. The real flash memory capacity is lesser than the marked memory capacity of this device is normal. Due to different firmware size, it will have the different free flash memory capacity. Please refer the table as below for more details.

Marked capacity	Real capacity range	Free capacity range after stored firmware
128MB	122MB~128MB	73MB~127MB
256MB	244MB~256MB	191MB~255MB
512MB	488MB~512MB	428MB~511MB
1GB	953MB~1000MB	879MB~999MB
2GB	1907MB~2000MB	1804MB~1999MB

3. System requirement

System requirement of MP3 player:

- (1) Microsoft ® Windows 98SE/2000/ME/XP
- (2) CPU series with Pentium 200MHZ or above
- (3) USB connector
- (4) 120MB hard disk free space
- (5) CD-ROM driver

4. Introduction

4.1 Feature

(1) **Support formats such as MP3 WMA WAV SMV JPG BMP**

This product supports playback of music files, photo browsing and movie playing with high quality.

(2) **Folder management**

Easy to choose the folder or music file to play.

(3) **DRM 9 playback**

This product supports WMA DRM 9 digital authorized music playback.

(4) **FM radio function**

This product provides FM radio. The user can also record the favorite FM program in WAV file.

(5) **Build-in 1.5" TFT color screen**

There is a build-in 1.5" TFT color screen, which can display photo and movie clearly.

(6) **Removable disc**

This product can be connected to PC with USB cable and serves as a removable disc.

(7) **Build-in rechargeable Li battery**

Charging is convenient and no need to buy extra batteries.

(8) **Convenient firmware upgrade**

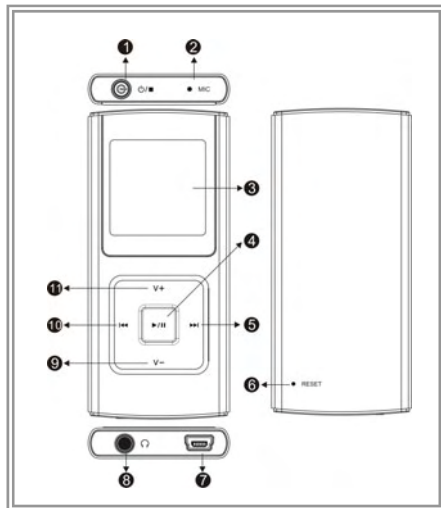
The firmware can be upgraded with software downloaded from Internet or in the attached disc (if any).

(9) **Supports Music Album**

This player supports to display the music album while playing.

4.2 Button layout

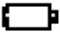


- (1) Power/Stop button
- (2) Microphone
- (3) Display area
- (4) Play / pause button ▶ / ||
- (5) Fast forward button ▶▶
- (6) Reset hole
- (7) USB port
- (8) Earphone jack
- (9) Volume down button —
- (10) Rewind button ◀◀
- (11) Volume up button +



4.3 Battery charge

This product adopts build-in rechargeable Li-Ion battery. 

You can connect the mp3 player to PC or use USB adapter to charge the battery. The following pictures indicate the charging status of the battery when connects to PC:

- (1) When the battery is charging, the icon will be changing from an empty battery to a full one to indicate the process.  → 
- (2) The following icon will replace the charging one when the battery is full but the power supply is not being cut off. 
- (3) The player will be automatically shut off when the power is used up.
- (4) Power saving mode: User can define the power off mode, such as idle off, sleep off, screen off to save power. Please refer to the setting instruction in function section for details.

4.4 USB driver installation

(USB driver needs to be installed only on Windows 98SE operating system is used.)

- (1) Execute Setup.exe in driver CD and complete the driver installation.
- (2) Reboot the PC.
- (3) Connect the MP3 player to the USB port of the PC.

4.5 Connection and download

4.5.1 Connection to PC

Plug the attached USB cable to PC, and connect the other end to the MP3 player. If the connection is successful, the screen of player will display the following picture. Note that, please don't use USB hub or USB extended line.



4.5.2 Music download

When the connection is done, select the desired music and click the right key of the mouse and select “copy” . Double click to open the device icon of the player (i.e. “H” , the name of device may differ) and then click the right key of the mouse and select “paste” . During the process of writing, the player may display the following picture. If you want to download authorized WMA files from Internet, please refer to the section of DRM music transfer function. Note that, this MP3 player supports 544 music files or 43 folders (includes sub-folders), it will build the play list by scanning the first 544 files which stores in first 43 folders, that is sorted by letter order. So please don't use too many folder and sub-folder to store the music files.



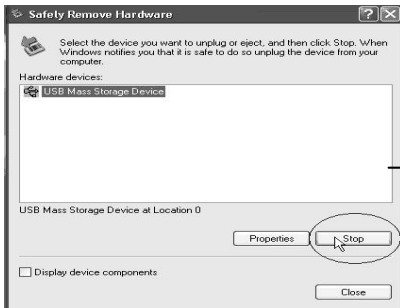
4.5.3 Remove from USB port

(1) Double click the icon of safely remove hardware on the task column, and the relevant dialog box will be displayed.



(2) On the picture of safely remove hardware dialog box, select the item of “USB mass storage device” and click “stop” button. The screen will display “Stop a Hardware Device” as below.

(3) Click “OK” button.



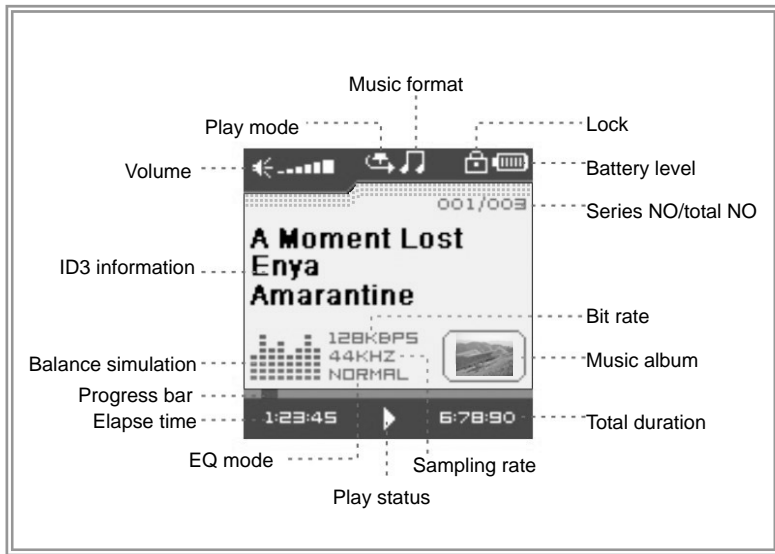
- (4) When the screen displays “Safe to Remove Hardware”, the player can be safely removed from PC.



Special reminder:

Do not disconnect the USB cable when the data is being transmitted between PC and the player, which may damage the player and lose the data in the player. Disconnection should be conducted only when “device can now be safely removed from the system” displayed. When the USB is in operation, other button is invalid. If the player fails to power on due to data loss or I/O mistake reminder by mal-operation, please refer to the trouble shooting section for solution.

4.6 LCD display



4.7 Menu

4.7.1 Main menu

- (1) MUSIC: Select MUSIC in the main menu, the device will enter music sub-menu.
- (2) PHOTO: Select PHOTO in the main menu, the device will enter photo sub-menu.
- (3) MOVIE: Select MOVIE in the main menu, the device will enter movie function.
- (4) VOICE: Select VOICE in the main menu, the device will enter voice playback function.
- (5) FM RADIO: Select FM RADIO in the main menu, the device will enter FM RADIO function.
- (6) MIC. RECORD: Select MIC. RECORD in the main menu, the device will enter microphone record function.
- (7) DELETE: Select DELETE in the main menu, the device will enter delete sub-menu.
- (8) SETTINGS: Select SETTINGS in the main menu, the device will enter setting sub-menu.
- (9) ABOUT: Select ABOUT in the main menu to check the memory status and software version of the device.
- (10) EXIT: EXIT the main menu and return to the music playback function.

4.7.2 Selection and exit

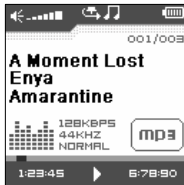
- (1) Long press play button ▶ || or press power/stop button to exit and return to the upper level menu. The uppermost menu is main menu, which includes: music mode, photo mode, movie mode, voice mode, FM radio mode, record mode, delete mode, setting mode, about and exit.
- (2) Select next or previous item by pressing fast forward button ►► or rewind button ◀◀. If the main menu is in music picture, press rewind button ◀◀ to switch to information page; if the main menu is in information page, press fast forward button ►►to switch to music picture.
- (3) Press play button ▶ || to confirm and enter the selected item.

4.8 Power on and off

4.8.1 Power on player

Press power/stop button to turn it on while the player is off. Power on images will be shown before going to the defaulted music play mode and followed by music playback. The power on time is determined by the music file number in the player.

This player supports user-defined image when power on. You can save the image file with size 128*128 pixel and named LOGO.BMP under the root directory of this device. The user-defined image will be displayed when you turn on the player on next time.



4.8.2 Power off player

- (1) When the player is powered off, the following statuses will be saved, which includes: current mode, music elapse time, and user settings.
(i.e. volume, EQ, timing off and play mode etc.)
- (2) If the player is powered off normally (i.e. the user shut it off or it is shut off according to the setting), the above-mentioned modes will be saved. If the player is powered off by pressing reset button, the above-mentioned modes will not be saved.
- (3) Except in record mode, long press power/stop button until the letters of Bye Bye appears and the screen will turn dark, the player will be powered off.



5. Application

5.1 Music playback function

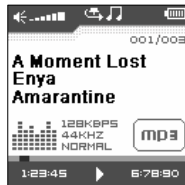
Press rewind button ◀◀ or fast forward button ▶▶ in the main menu to select Music function.

Press play button ▶ || to enter the sub-menu of Music Play All or Internal Device.



Operation instruction:

- (1) When the music is stopped or played, press rewind button ◀◀ or fast forward button ▶▶ to select previous or next file.
- (2) When playing the music, long press rewind button ◀◀ or fast forward button ▶▶ to move fast backward or forward within the track.
- (3) When playing the music, press play button ▶ || to pause and press play button ▶ || again to resume the playing. Press power/stop button to stop the playing.



5.1.1 Play all

Press rewind button ⏮ or fast forward button ⏭ to select Play All, and press play button ▶ || to enter and start playing all music in the player.



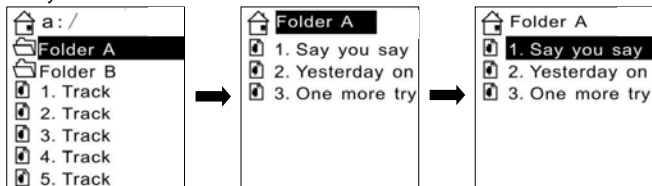
5.1.2 Internal device

Press rewind button ⏮ or fast forward button ⏭ to select Internal device, and press play button ▶ || to enter the function of play list. Press rewind button ⏮ or fast forward button ⏭ to select folder or a single music and press play button ▶ || to start playing. Use volume up button+ or volume down- button to enter or exit a certain folder. The player will play the selected music or all the music in a certain selected layer of folder (sub folder inclusive).

Play one file



Play one folder



The difference of playing songs in folders and playing under root directory

Play mode	Under root directory	In folder and its subdirectory.
Normal	Play all the songs under root directory and in folders one time and then stop.	Play all the songs in current folder one time and then stop.
Repeat one	Repeat play the current song.	Repeat play the current song in current folder.
Repeat all	Repeat play all the songs under root directory and in folders.	Repeat play all the songs in current folder except the songs in folder's sub-folder.
Random	Repeat play all the songs under root directory and in folders.	Repeat play all the songs under root directory and in folders.
Rand.&Rep.	Shuffle repeat play all the songs under root directory and in folders.	Shuffle repeat play all the songs under root directory and in folders.

5.2 Photo

Press rewind button ◀ or fast forward button ▶ in the main menu to select Photo function. Press play button ▶ || to enter the sub menu of Photo : Manual, Slide Show and Thumbnail. This player supports pictures in JPG and BMP formats. In order to get a smooth and clear display, please convert the resolution of pictures to 128x128 on PC and then put them in PHOTO folder (If there is no PHOTO folder, please create one) . **Please be noted that the player cannot find that photo if it is not stored in PHOTO folder of the player. The PHOTO folder will be created by the software automatically if there is no PHOTO folder on the player.**



5.2.1 Manual browse

After entering photo function, press rewind button ⏮ or fast forward button ⏭ to select manual browse and press rewind button ⏮ or fast forward button ⏭ to browse the photo manually.



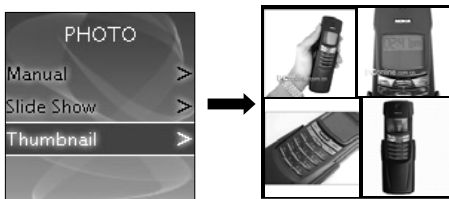
5.2.2 Slide show

After entering photo function, press rewind button ⏮ or fast forward button ⏭ to select slide show and press rewind button ⏮ or fast forward button ⏭ to browse the photo automatically.



5.2.3 Thumbnail

After entering photo function, press rewind button ◀◀ or fast forward button ▶▶ to select thumbnail display and press play button ▶ || to start displaying photo in thumbnail form.

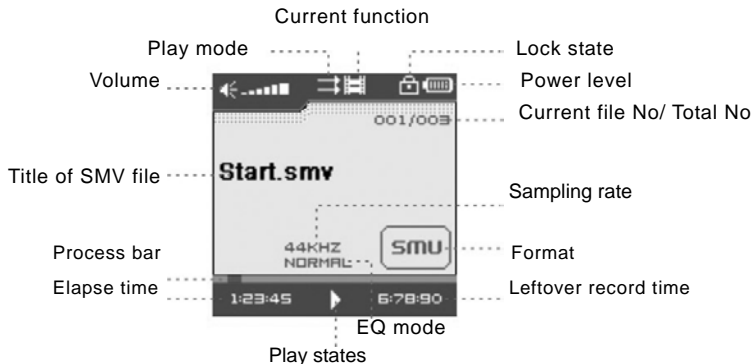


5.3 Movie

Press rewind button ◀◀ or fast forward button ▶▶ in main menu to select Movie function and press play button ▶ || to enter Movie play.

- (1) This player supports the playing of movie files in SMV format. Convert the desired movie (MPG, MP4, DVD, Quick time, Real player, AVI, WMV format) to SMV format with transcoder software (video2smv.exe) in the attached CD (if any) or stored in the player or downloaded from Internet.

- (2) Movie should be put in MVIDEO folder of the player. If there is no this folder, please create one. **Please be noted that the player cannot find those movie files if they are not stored in MVIDEO folder of the player. MVIDEO folder will be created by the software automatically after power on.**
- (3) When the movie is playing, press volume up button + or volume down button – to adjust the volume.



How to transfer the movie file to SMV format by Video2smv.exe process

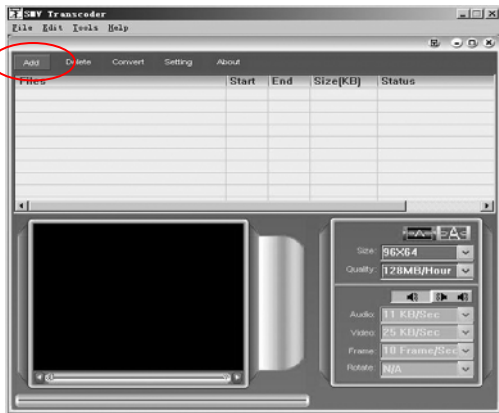
- A. Select video2smv and double click it to enter the folder as indicates in the following figure:



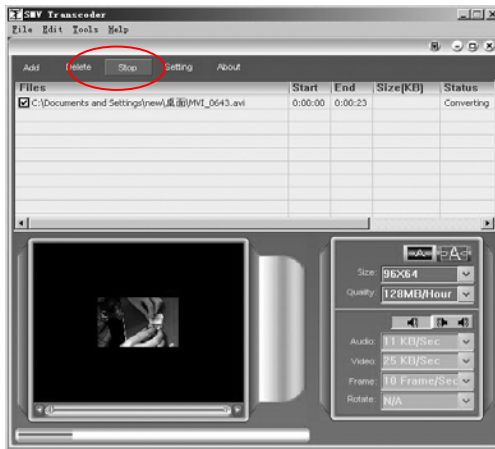
- B. Select and double click video2smv.exe program to enter as indicates in the following figure:



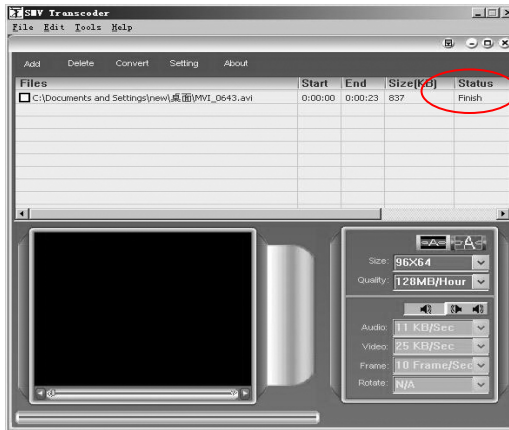
- C. Click “Add” to select the files that need to be converted. You can set the size and quality at the same time. The screen resolution of this player is 128x128 pixel, please set the size less than 128*128 pixel. The higher quality produces larger SMV file size and vice versa. The higher the quality setting value, the clearer the picture will be and vice versa. Click Setting to select the directory where the converted SMV files store.



D. Click Convert to start the converting. Meanwhile you can click “stop” to stop transferring.



- E. When there is Finish appears in the column of Status, it means the conversion is finished. You may close the windows and transfer the formatted movie with SMV format to the player.
- F. Attention : If you can use the windows media player to play the video files in your PC, and the video file type is supported by video2smv, it will be able to be converted to SMV format.

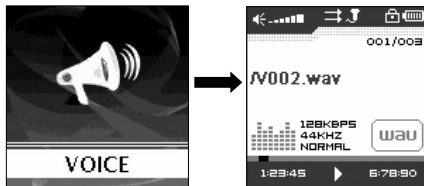


5.4 Voice

Press rewind button ◀◀ or fast forward button ▶▶ in the main menu to select Voice function and press play button ▶ || to enter that voice play function.

The following functions are provided in voice mode:

- (1) Play recorded files from FM
- (2) Play recorded files from microphone
- (3) Support record files in WAV format (ADPCM), that stored in VOICE directory of the player.

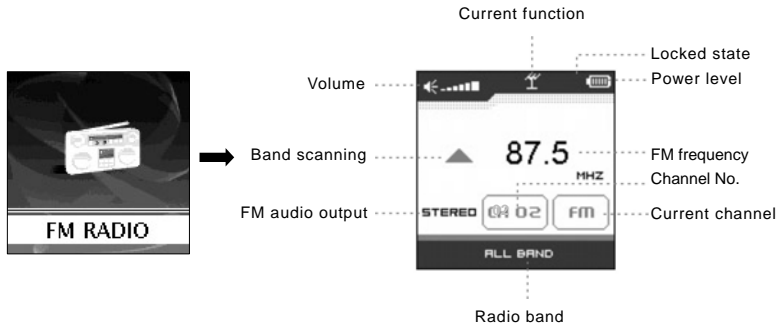


Operation instruction:

- (1) When in voice standby or play mode, press rewind button ◀◀ or fast forward button ▶▶ to select the previous or next voice file.
- (2) When in voice play mode, long press rewind button ◀◀ or fast forward button ▶▶ to move fast backward or forward within the track.
- (3) When in voice play mode, press play button ▶ || to pause and press play button ▶ || again to resume play. Press power/stop button to stop playing.

5.5 Radio

Press rewind button ◀◀ or fast forward button ▶▶ in the main menu to select FM Radio function and press play button ▶ || to enter FM Radio function. Up to 10 radio stations can be stored in the radio



FM submenu instruction

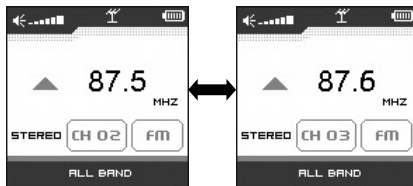
- (1) FM record: Support digital stereo record during FM listening.
- (2) FM band: Includes 3 radio band: US-EU band (87~108MHz), Japan band (76~91MHz), All band (76~108MHz)

- (3) Auto scan function: select this item, push the ◀◀ or ▶▶ to select YES, Press the ▶ || to begin scanning. It will play at the first station after scanning out all the stations in this FM band. It will store the frequency to the stations in sequence via their signal strength. The most strong signal strength frequency will be saved to CH01.
- (4) Select FM radio to return the FM function.



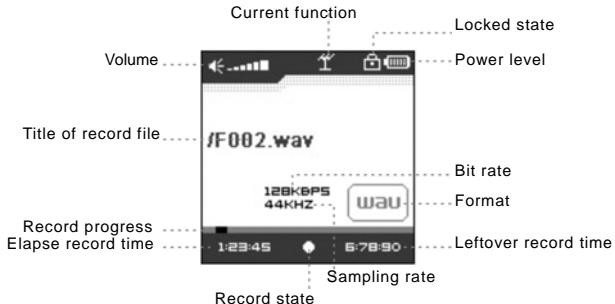
5.5.1 FM radio

- (1) Press play button ► || to switch radio station from CH01→CH02→...→CH10;
When switching the radio station, the player will automatically save the current frequency to the current station number before skip to the next station.
- (2) Press rewind button ◀◀ or fast forward button ▶▶ to fine-tune the frequency forward or backward by 0.1MHz.
- (3) Long press rewind button ◀◀ or fast forward button ▶▶ to search for the radio station with the strongest signal forward or backward.



5.5.2 FM record

- (1) During FM playing, long press ▶ || button to enter the FM submenu, Press ◀◀ or ▶▶ to select the FM Record option. Press the ▶ || button start FM recording. At this moment, the player will display the picture of FM record and recording icon. The recorded content is FM program but not microphone. The flashing record status icon ● indicating FM record is in progress; At this moment, press play button ▶ || will pause recording and the icon ● || will appear when FM record is paused. Press PLAY button ▶ || again to resume FM recording. Press power/stop button to stop the FM record. When FM recording is stopped, the picture will be changed to FM radio function. Enter VOICE function to listen to the recorded FM program.
- (2) When the battery is running out of power in recording state, there will be low energy level warning. The recorded files will be saved before player exits from record state and returns to FM radio.



5.5.3 FM band

Press rewind button ◀◀ or fast forward button ▶▶ in FM band setting menu to select FM band and press play button ▶ || to confirm. Long press play button ▶ || or press power/stop button to skip this setting. FM band includes: US-EU band , Japan band and All band.



5.5.4 Auto scan

Select "YES" to start FM auto scan, while select "NO" to return to the FM sub-menu. Up to 10 FM stations can be saved.



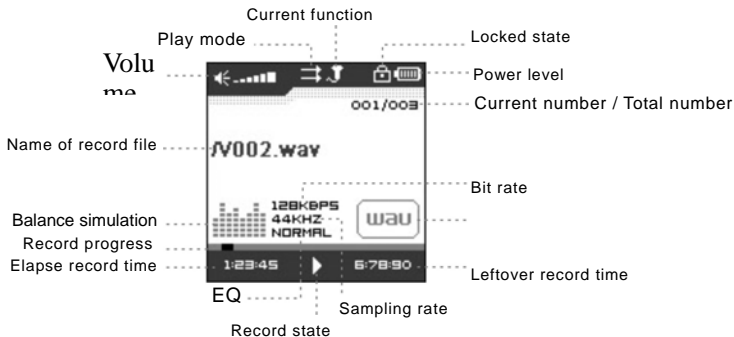
5.5.5 FM Radio

Select FM radio to return to the FM playing screen.

5.6 Record

Press rewind button ◀ or fast forward button ▶ in the main menu to select MIC. RECORD function and press PLAY button ▶ || to start recording from the microphone.

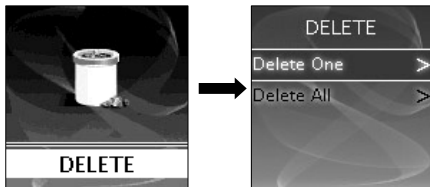
- (1) The flashing recording state icon ● indicates recording is in progress; At this moment, press play button ▶ ||, recording pause icon ● || will appear and the microphone recording will be paused. Press PLAY button ▶ || again to resume microphone recording. Press POWER button to stop microphone recording. When the microphone recording is stopped, the interface will be changed to voice playback function.



- (2) 7 recording sampling rate: user can set the sampling rate of recorded file. The higher the sampling rate, the better recording quality will gain. The lower the sampling rate, the more common quality will gain with longer recording duration. There are total 7 sampling rate available: 8KHz, 11KHz, 16KHz, 22KHz, 32KHz, 44KHz and 48KHz.
- (3) If the memory is full during the recording, Device Full will be displayed and the player will stop recording and save the recorded files automatically. No more recording can be done in this case.
- (4) If the battery is running out of power during the recording, Low Battery will be displayed and the player will stop recording and save the recorded files automatically. No more recording can be done in this case.
- (5) The recorded file is defined automatically as V###.WAV, ### is a figure composed of three numbers starting with 001 for the first file and 002 for the second one. The format of recorded file is WAV.

5.7 Delete

Press rewind button ◀◀ or fast forward button ▶▶ in the main menu to select Delete function and press play button ▶ || to enter Delete function, which includes delete one and delete all..Note that, deleted files can't be recovered.



5.7.1 Delete one

Press rewind button ◀◀ or fast forward button ▶▶ to select the files that need to be deleted and press play button ▶ || to confirm the deletion. Long press play button ▶ || or press power/stop button to quit the deletion and return to the main menu.

5.7.2 Delete all

Press rewind button ◀◀ or fast forward button ▶▶ to select if or not to delete all files in the player. Press play button ▶ || to confirm the selection. If YES, all music files (MP3 and WMA), voice files(WAV), movie files(SMV), user's own files and photo files(JPG and BMP) in the player will be deleted. Long press POWER/STOP button to stop deleting, but deleted files can't be recovered.

5.8 Settings

Press rewind button ◀◀ or fast forward button ▶▶ in the main menu to select Settings menu and press play button ▶ || to enter Settings menu, which includes language setting, EQ setting, play mode setting, recording format setting, contrast setting, timing off setting and resume default value setting.



5.8.1 Language

Press rewind button ◀◀ or fast forward button ▶▶ in language setting menu to select language and press play button ▶ || to confirm. Long press play button ▶ || or press power/stop button to skip this setting. The following languages are available: English, Dutch, French, German, Italian, Portuguese, Spanish, Hebrew, Poland, Hungarian, Russian. It will be difference due to different firmware version.



5.8.2 EQ

Press rewind button ⏮ or fast forward button ⏭ in EQ setting menu to select EQ and press play button ▶ || to confirm. Long press play button ▶ || or press power/stop button to skip this setting. When playing music, the change of EQ can be felt in the earphone. EQ of this player includes: Normal, Rock, Jazz, Classical, Pop, Ska, Soft Music, Soft Rock, Dance, Full Bass and Treble, Full Treble, Large Hall, Techno, Ultra Bass, Blues, Club, Live, Party and Reggae.



5.8.3 Play mode

Press rewind button ⏮ or fast forward button ⏭ in play mode setting menu to select play mode and press play button ▶ || to confirm. Long press play button ▶ || or press power/stop button to skip this setting. The play mode of this player includes: normal, repeat one, repeat all, random and random & repeat. Random and random & repeat can only be applied to music play.



5.8.4 Record Type

Press rewind button ◀◀ or fast forward button ▶▶ in Record Type setting menu to select recording format and press play button ▶ || to confirm. Long press play button ▶ || or press power/stop button to skip this setting. This setting is used to set the sampling rate of microphone recording. The available recording formats for this player are: 8KHz, 11KHz, 16KHZ, 22KHz, 32KHz, 44KHz and 48KHz.



5.8.5 Contrast

Press rewind button ◀◀ or fast forward button ▶▶ in the contrast setting menu to select contrast and press play button ▶ || to confirm. Long press play button ▶ || or press power/stop button to skip this setting.

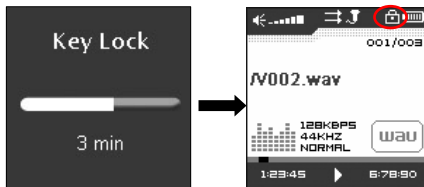


5.8.6 Timer off

Press rewind button ⏮ or fast forward button ⏭ in timing off setting menu to select timing off and press play button ▶ || to confirm. Long press play button ▶ || or press power/stop button to skip this setting. The sub menus of timing off are: stop off, sleep off, backlight off and key lock.

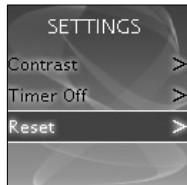


After the user set the key lock time, in music or voice playback mode, or listening to FM radio, all button operations will not work if the user doesn't press any key after the setting time is passed. The screen will display a lock icon (as below figure). You have to press the POWER button to unlock and the lock icon will disappear. The key lock also can be locked by pressing and holding VOLUME DOWN button and PLAY button simultaneously.



5.8.7 Reset

Select "Yes" to restore all settings to default value and the player will be automatically reset (V3.07 later firmware version).



5.9 About

Press rewind button ◀◀ or fast forward button ▶▶ in the main menu to select ABOUT and press play button ▶ || to enter About. You can check the total memory capacity, free space and version of the software.



5.10 Exit

Exit and return to the music playback function.

6. Trouble shooting

If there is no picture displayed after the player is connected to PC and cannot serve as a storage device or cannot be powered on after the battery is fully charged, please refer to the following steps to update the software in the player.

- (1) Download the most updated software from the attached CD (if any) or from the website and execute the setup.exe files in the folder to complete the installation.
- (2) Long press power button of the player for five seconds and then plug in the USB cable.
- (3) Execute the updated software installed by step (1) to start software upgrade and release the Power/Stop button.
- (4) The upgrade of software may format the player, so please copy the music or files in the player to PC first.
- (5) If the software upgrade program cannot detect the player, please unplug the USB cable and repeat step (2) and (3) until the player is detected and the software upgrade is completed.

7. DRM music transfer function

7.1 Download operation of WMA music with DRM9 (PD-DRM) protection

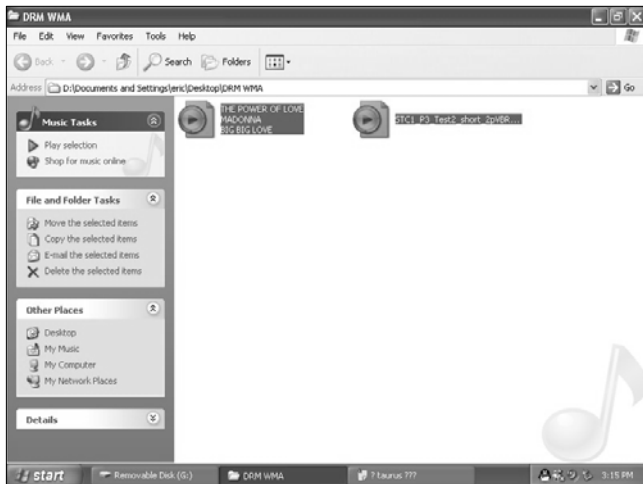
- (1) On Window 98SE / Window ME / Windows 2K / Windows XP, music with DRM should be transferred by Windows Media Player version 9.0 or 10.0 (Version 10.0 is for Windows XP only) to mp3 player.
- (2) Other download operation probably will cause the mp3 player can not read and play the music with WMA DRM file.

7.2 Operation introduction

- (1) On Window 98SE / Window ME / Windows 2K / Windows XP, users should upgrade Windows Media Player to version 9.0 or 10.0 (Version 10.0 is only for Windows XP).
- (2) System might request to download the license in case if the user does not download the music with DRM properly from the web site. In this case, the user needs to download the license from music publisher as instruction of Microsoft Website showing in the operating window.
- (3) On Windows Media Player version 10.0 (Windows XP only)

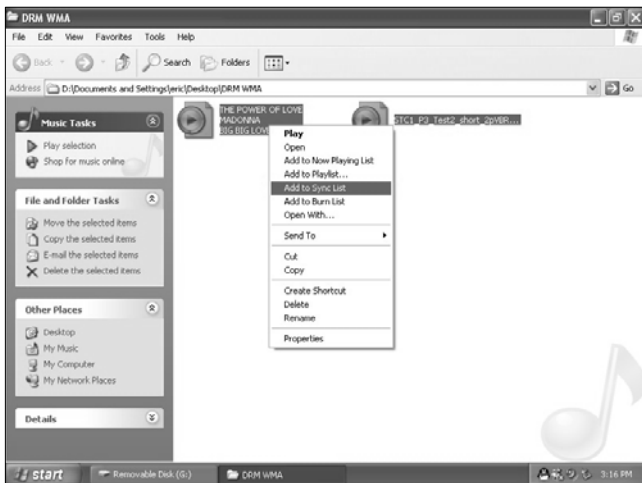
A. Connect player to PC.

B. Choose the desired WMA music with DRM.

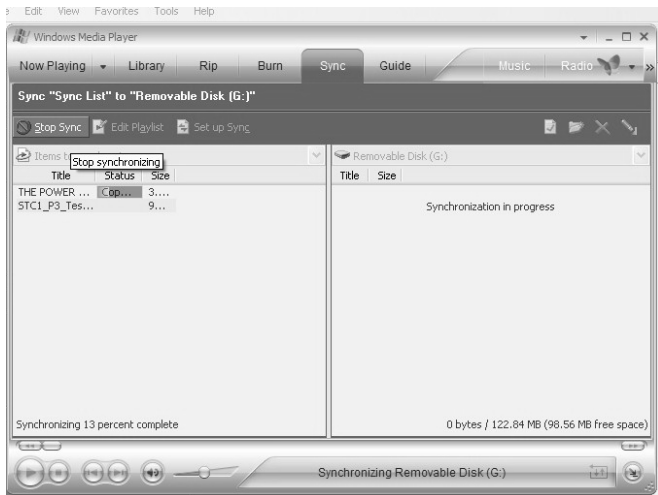


C. Click Right button of the mouse and choose “Add to Sync list”.

D. On the open window, choose “Sync” option.



E. On “Sync” window, choose the desired WMA music with DRM as step B and choose “Removable Disk”.



F. Click “Start Sync” to transfer the WMA music with DRM to player.



8. Specification

Technical Specification	MP3 bit rate	32~320Kbps	Music format	MP3, WMA
	Photo format	JPG, BMP	Movie format	SMV
	Sampling rate	8/11/16/22/32/44/48KHz	Frequency response	20Hz~20KHz
	Recorded format	WAV (ADPCM)	Dynamic current	<70mA (play mp3 music & backlight OFF)
	Maximun recording duration	(8KHz, 32kbps) 128MB: 9 hours 256MB: 18 hours 512MB: 36 hours 1G: 72 hours 2G: 144hours	Power off current	<500uA
	SNR	>90db	Dimension	91*41.4*8.9mm
	Dynamic scope	>80db (1KHZ)	Weight	40g
	Distortion	<0.05%	Screen	1.5"TFT 128x128 65K color screen
	Output power	5mW*2	Battery	Rechargeable Li-Ion battery
	Music number limitation	544 files or 43 folders	Playback duration	<10 hours
	Working environment	Humidity <85%, -10~40 Celsius	USB port	USB1.1/ 2.0 Full Speed
Capacity	<input type="checkbox"/> 128MB <input type="checkbox"/> 256MB <input type="checkbox"/> 512MB <input type="checkbox"/> 1GB <input type="checkbox"/> 2GB			

Modifications not approved by the party responsible for compliance could void user's authority to operate the equipment.

NOTE: This equipment has been tested and found to comply with the limits for Class B digital device, pursuant to part 15 of the FCC Rules. These limits are designed to provide reasonable protection against harmful interference in a residential installation. This equipment generates, uses and can radiate radio frequency energy and, if not installed and used in accordance with the instructions, may cause harmful interference to radio or television reception, which can be determined by turning the equipment off and on, the user is encouraged to try to correct the interference by one or more of the following measures:

Reorient or relocate the receiving antenna.

Increase the separation between the equipment and the receiver.

Connect the equipment into an outlet on a circuit different from that to which the receiver is connected.

Consult the dealer or an experienced radio / TV technician for help

This manual was correct and complete at the time of printing. However specifications and updates can occur at any time without prior notice.



This device complies with part 15 subpart B of the FCC Rules. Operation is subject to the following two conditions:

- (1) This device may not cause harmful interference, and
- (2) This device must accept any interference received, including interference that may cause undesired operation.

No part of this manual may be copied, republished, reproduced, transmitted or distributed in any way without prior written consent of Nextar, Inc. Any unauthorized distribution of this manual is expressly forbidden.

"Nextar, a trademark of Nextar (Hong Kong) Limited (pending)."

Nextar may find it necessary to modify, amend or otherwise change or update this manual. We reserve the right to do this at any time, without any prior notice. All specifications and features are subject to change without notice. All screen shots shown are simulated and may not represent the actual screen on production units sold to consumers.

For instruction manuals, updated drivers or other information, be sure to visit our website at:

www.Nextar.com

Or write us at:

Nextar

1661 Fairplex Dr.

LaVerne, CA USA 91750

Customer Services: 1-888-849-0846

Copyright © 2006